



BROADLANDS

1 Library Place, St Helier, Jersey, JE2 3NL

Tel: 01534 880770

enquiries@broadlandsjersey.com

www.broadlandsjersey.com



19 The Carlton Havre Des Pas, Jersey, JE2 4HP **£556,000 R941**

- CONTEMPORY 2 BEDROOM 2 BATHROOM EXCLUSIVITY
- NEVERENDING SEA VIEWS FROM PRIVATE BALCONY
 - SECURE GARAGE PARKING
 - LIFT SERVICE & CARETAKER
 - AIR CON
- PRICES FROM £526,000 UP TO £586,000

EXCLUSIVE LUXURY HIGH SPECIFICATION APARTMENT ENJOYING BREATHTAKING SEA VIEWS! Currently fully let to be sold as either an investment or with vacant possession for a beautiful new home. Generous two double bedroom two bathroom property offering spacious living accommodation throughout, with the added benefit of air conditioning and substantial balcony off the living room and bedroom two. Allocated secure garage parking and store.

Communal Car Park with one allocated space and storage cupboard
Communal landscaped garden

Situated in Havre des Pas on the fringe of the town centre overlooking the recently restored bathing pool dating back to late Victorian times. Sandy beach is literally on your doorstep. Excellent restaurants nearby plus local bars and hotels, quality of life is blissful and to be enjoyed. St. Helier's centre is only ten minutes' stroll away so you can leave your car in the secure garage and walk to work. Early morning and evening walks will become a regular and pleasurable experience!

Call Broadlands the vendors agent today to arrange a private viewing of this or some other examples with prices starting from £526,000 up to £586,000.

Entrance Hall

Leads to all principal rooms...

Kitchen

12' 3" x 11' 3" (3.73m x 3.43m) Fully fitted kitchen with granite worktops. Appliances include; double oven, built-in microwave, extractor hood, 4 ring ceramic hob, fridge/freezer and dishwasher. Tiled flooring as laid.

Utility Room

8' x 7' 7" (2.44m x 2.31m) Plumbed for 2 appliances.

Living Room

20' 10" x 12' 1" (6.35m x 3.68m) Fabulous large living space offering awe inspiring views across St Clements Bay!

Master Bedroom

19' 8" x 9' 6" (5.99m x 2.90m) Beautifully appointed double bedroom. Carpet as laid. Fitted wardrobe. Window faces over front with stunning coastal views of St Clements Bay! Leads to..

En-Suite

9' 6" x 7' 2" (2.90m x 2.18m) Porcelanosa tiled walls and floors, wash hand basin, close coupled W.C. bath and separate shower.

Bedroom 2

17' x 8' 10" (5.18m x 2.69m) Another bright and airy double bedroom. Carpet as laid. Fitted wardrobe. Leads to balcony and stunning coastal views across St Clements Bay!

Bathroom

7' 10" x 5' 10" (2.39m x 1.78m) Porcelanosa tiled walls and floors, wash hand basin, close coupled W.C. and shower.

Services

All mains excluding gas
Electric under floor heating
Double glazing throughout
Video entrance system
Service charge of £183.70 pcm

Exterior

Balcony off living room and Bedroom 2

Area:

Int: 95m² (1022sqft) Ext: 14m² (150sqft)

Dimensions:

Kitchen: 3.75m (12' 3'') x 3.45m (11' 3'')

Utility Room: 2.44m (8' 0'') x 2.32m (7' 7'')

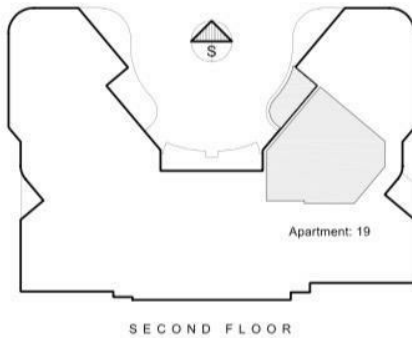
Living Room: 6.36m (20' 10'') x 3.69m (12' 1'')

Bedroom 1: 6.00m (19' 8'') x 2.90m (9' 6'')

En-Suite: 2.90m (9' 6'') x 2.20m (7' 2'')

Bedroom 2: 5.20m (17' 0'') x 2.70m (8' 10'')

Bathroom: 2.40m (7' 10'') x 1.75m (5' 8'')



Apartment Location



Apartment Layout



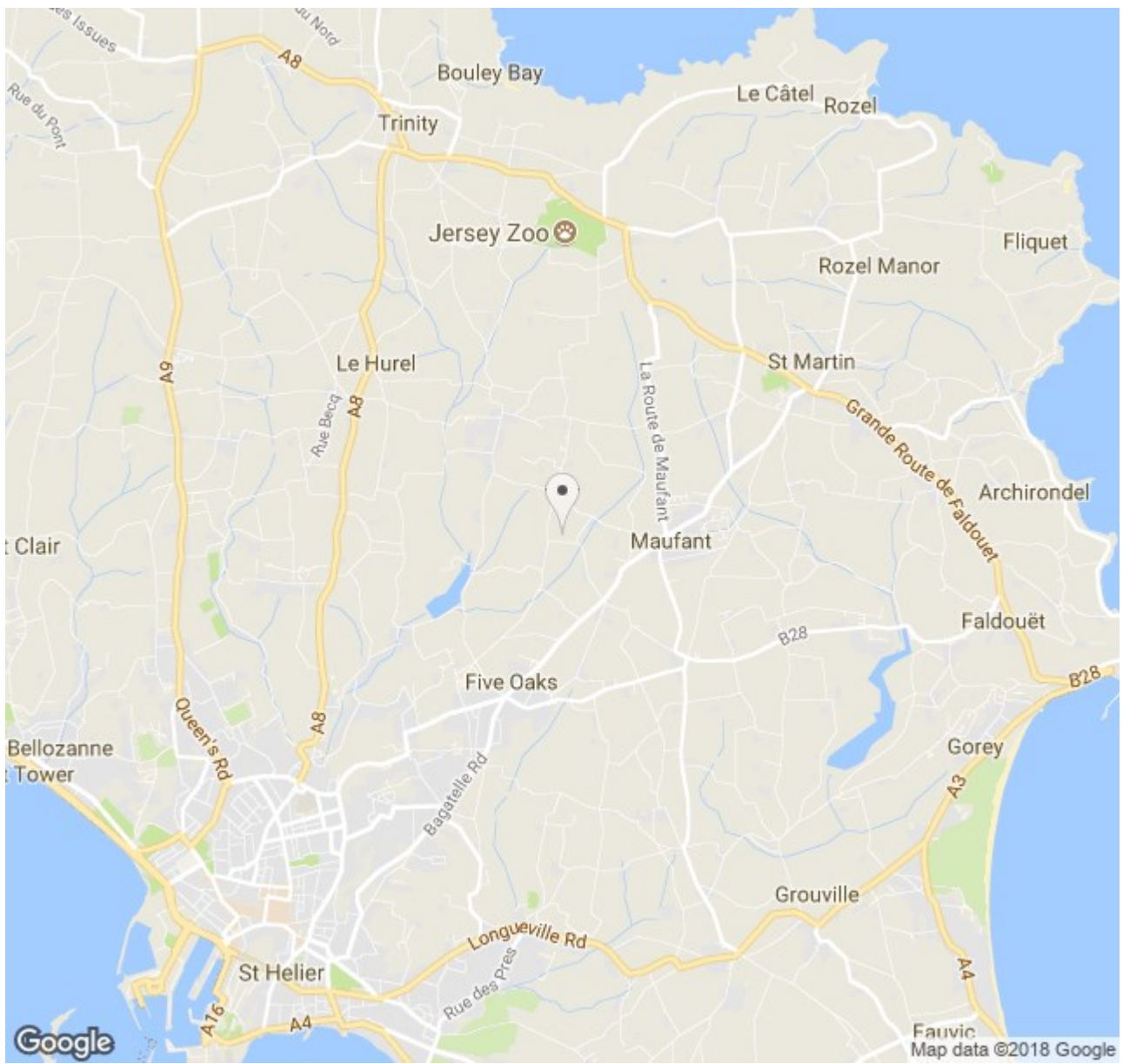
BROADLANDS

1 Library Place, St Helier, Jersey, JE2 3NL

Tel: 01534 880770

enquiries@broadlandsjersey.com

www.broadlandsjersey.com



Directions:



BROADLANDS

1 Library Place, St Helier, Jersey, JE2 3NL

Tel: 01534 880770

enquiries@broadlandsjersey.com

www.broadlandsjersey.com