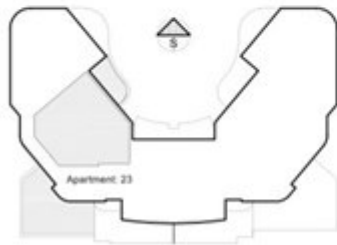


Havre Des Pas, St. Helier Jersey

£586,000 Share Transfer

Area:
Int: 95m² (1022sqft) Ext: 67m² (721sqft)
Dimensions:
Kitchen: 3.75m (12' 3") x 3.45m (11' 3")
Utility Room: 2.44m (8' 0") x 2.32m (7' 7")
Living Room: 6.36m (20' 10") x 3.69m (12' 1")
Bedroom 1: 6.00m (19' 8") x 2.90m (9' 6")
En-Suite: 2.90m (9' 6") x 2.20m (7' 2")
Bedroom 2: 5.20m (17' 0") x 2.70m (8' 10")
Bathroom: 2.40m (7' 10") x 1.75m (5' 8")



THIRD FLOOR
Apartment Location



Apartment Layout