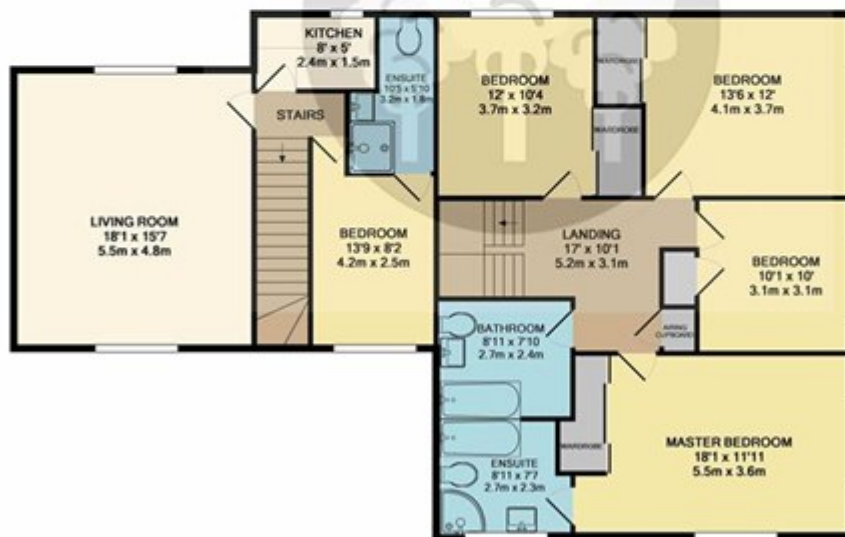


# Bagatelle Road, St. Saviour Jersey

£1,075,000 Freehold



GROUND FLOOR  
APPROX. FLOOR  
AREA 1656 SQ. FT.  
(153.9 SQ. M.)



1ST FLOOR  
APPROX. FLOOR  
AREA 1457 SQ. FT.  
(135.4 SQ. M.)

TOTAL APPROX. FLOOR AREA 3113 SQ. FT. (289.2 SQ. M.)

While every attempt has been made to ensure the accuracy of the floor plan contained here, measurements of doors, windows, rooms and any other items are approximate and no responsibility is taken for any error, omission, or mis-statement. This plan is for illustrative purposes only and should be used as such by any prospective purchaser. The services, systems and appliances shown have not been tested and no guarantee as to their operability or efficiency can be given.  
Made with Webtopi ©2017